

## 16 Webster Street South Lismore

### Table of Contents

- | [Property Details](#)
- | [Photo Gallery](#)
- | [Map](#)
- | [Contact For Inspection](#)

## Property Details

16 Webster Street, SOUTH LISMORE



SOLD BY THE WAL MURRAY TEAM

3  1  2 

Discover the charm of this recently restored highset home located in South Lismore. Being raised off the ground, the home offers a drive through tandem garage underneath plus a large amount of storage space which is fully concreted.

The home includes 3 bedrooms plus a separate study which is ideal for the young family. Plenty of living space with the formal lounge room including wood heater, separate dining/family area with air-conditioning, adjacent to kitchen.

Elegance and character shine through with polished timber floors and high ceilings throughout the home, giving a timeless appeal of these classic features.

Enjoy the outdoors in your fully fenced yard, surrounded by established fruit trees and flourishing veggie gardens. Embrace a sustainable lifestyle, pick fresh fruits, and savour the rewards of your own homegrown produce. All this and more with a small, fenced chicken coop as well.

The home is complete with a solar power system plus extra parking bay to the side of home, for boat/trailer or van. Ideal location for the children, being only 350m to local park, sporting fields and bike track. Bring the family here for all to enjoy.

- 3 Bedrooms
- 1 Bathroom
- 2 Garages
- Air Conditioning
- Study
- Open Fire Place
- Floor boards
- Fully Fenced
- Dishwasher

---

**\$429,000**

## Photo Gallery





first national  
Wal Murray & Co



first national  
Wal Murray & Co

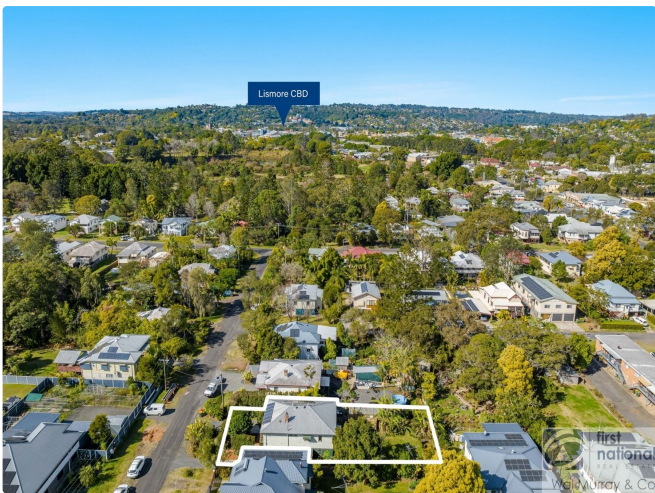


first national  
Wal Murray & Co



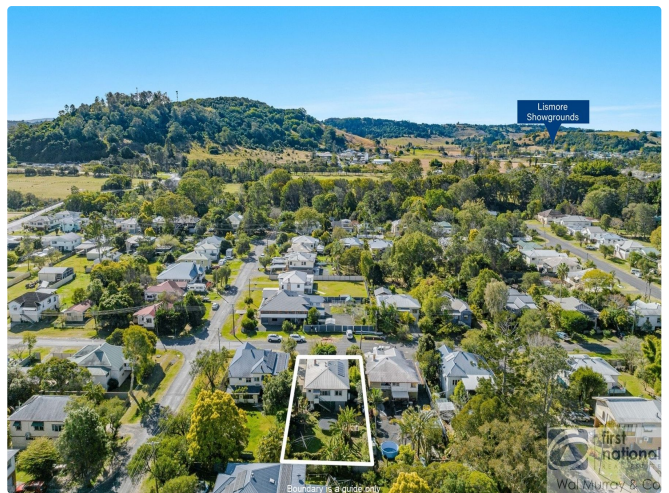
Boundary & a guide only

first national  
Wal Murray & Co



Lismore CBD

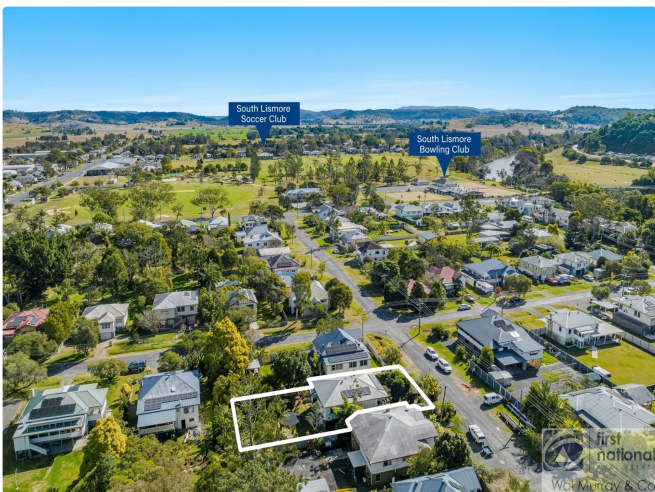
first national  
Wal Murray & Co



Lismore Showgrounds

Boundary & a guide only

first national  
Wal Murray & Co



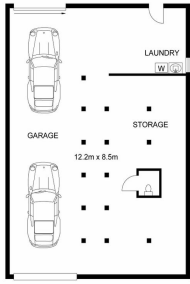
South Lismore Soccer Club

South Lismore Bowling Club

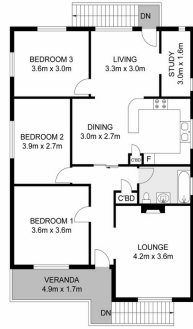
first national  
Wal Murray & Co



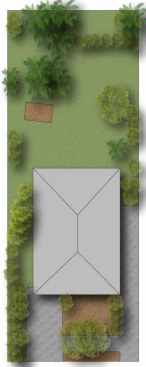
first national  
Wal Murray & Co



LOWER LEVEL



UPPER LEVEL



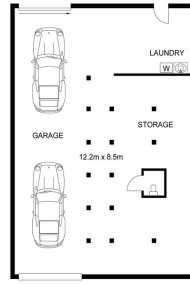
SITE PLAN

INT : 96.4m<sup>2</sup>  
EXT : 7.8m<sup>2</sup>  
GARAGE : 103.7m<sup>2</sup>

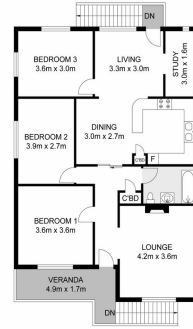


16 Webster Street, South Lismore

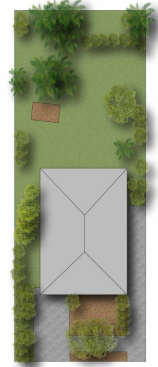
Dimensions are approximate. All information contained herein gathered from sources we believe to be reliable. However we cannot guarantee its accuracy and interested persons should rely on their own enquiries. © wisomedia vision 2023.



LOWER LEVEL



UPPER LEVEL



SITE PLAN

INT : 96.4m<sup>2</sup>  
EXT : 7.8m<sup>2</sup>  
GARAGE : 103.7m<sup>2</sup>



16 Webster Street, South Lismore

Dimensions are approximate. All information contained herein gathered from sources we believe to be reliable. However we cannot guarantee its accuracy and interested persons should rely on their own enquiries. © wisomedia vision 2023.

## Map



## Contact For Inspection



### **BENJAMIN CONTE**

LICENSED REAL ESTATE AGENT

---

0408 368 913

[ben@walmurray.com.au](mailto:ben@walmurray.com.au)